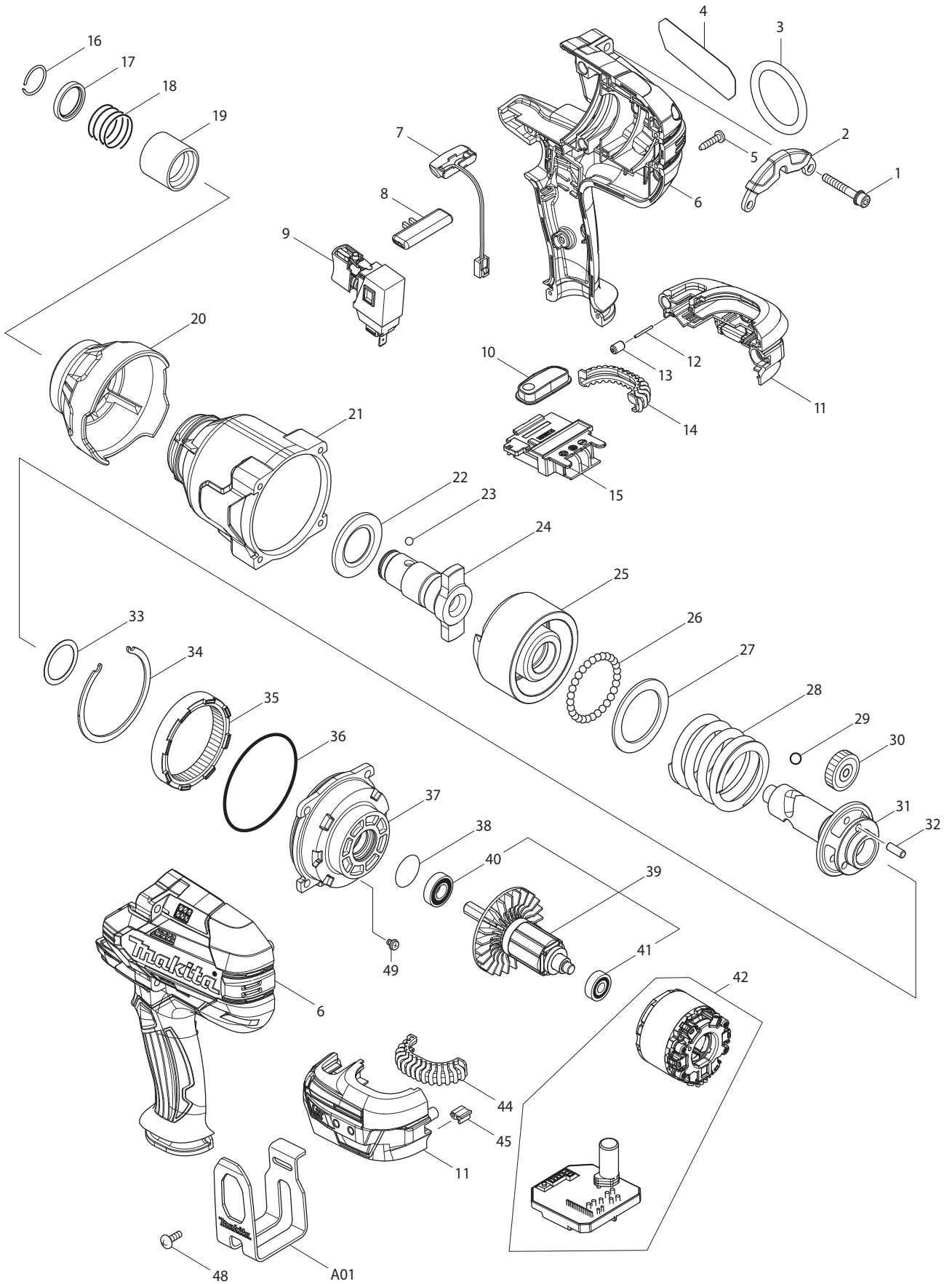




06 - 2017
DTW800XVZ

18V LXT Brushless 7/16" Hex Impact Wrench, High Voltage



Item No	Type	Sub	Part No	Description	Qty	Unit
001		1	251476-6	HSH BOLT M5X35 W/WR	4	PC.
		2	265D13-4	HSH BOLT M5X35 W/WRM	4	PC.
002			162341-3	BRACKET	1	PC.
003			282022-4	RING 40	1	PC.
004		2	857K43-7	NAME PLATE F/DTW800XV	1	PC.
005		2	265A48-7	TAPPING SCREW M4X18	9	PC.
006		1	183H36-3	HOUSING SET	1	SET
		2	1830A6-1	HOUSING SET	1	SET
007			620351-1	LED CIRCUIT	1	PC.
008			456268-0	CHANGE LEVER F/R	1	PC.
009			143416-7	SWITCH COMPLETE	1	PC.
010			144859-6	SWITCH PLATE COMPLETE	1	PC.
011			183C12-7	BATTERY HOUSING SET	1	SET
		INC.	263005-3	RUBBER PIN 6	2	PC.
012			268284-8	PIN 1.5	1	PC.
013			263036-2	RUBBER PIN 5	1	PC.
014		1	424773-5	CUSHION RUBBER	1	PC.
		2	422A56-3	CUSHION RUBBER	1	PC.
015			643899-6	TERMINAL	1	PC.
016			234384-6	RING SPRING 19	1	PC.
017			326619-0	RING 21	1	PC.
018			231434-8	COMPRESSION SPRING 22	1	PC.
019			326618-2	SLEEVE	1	PC.
020			424978-7	BUMPER	1	PC.
021			144473-8	HAMMER CASE COMPLETE	1	PC.
022			346948-5	WASHER 25	1	PC.
023			216007-8	STEEL BALL 6.4	2	PC.
024			326617-4	ANVIL H	1	PC.
025			326613-2	HAMMER	1	PC.
026			216002-8	STEEL BALL 4.8	29	PC.
027			267493-6	FLAT WASHER 38	1	PC.
028			234383-8	COMPRESSION SPRING 38	1	PC.
029			216009-4	STEEL BALL 7.1	2	PC.
030		3	226880-8	SPUR GEAR 24	3	PC.
031			326611-6	SPINDLE	1	PC.
032			268079-9	PIN 5	3	PC.
033		2	267127-1	FLAT WASHER 26	1	PC.
034			346947-7	RETAINER	1	PC.
035			227392-4	INTERNAL SPUR GEAR 54	1	PC.
036			213720-9	O RING 67	1	PC.
037			135908-0	INTERNAL GEAR CASE ASSY	1	PC.
		INC.		Item No. 36,38		
038			213961-7	O RING 22	1	PC.
039		3	519592-3	ROTOR ASSY	1	PC.
		INC.		Item No. 40,41		
040			210069-8	BALL BEARING 6900DDW	1	PC.
041			211022-7	BALL BEARING 607ZZ	1	PC.
042		2	629361-5	* STATOR COMPLETE	1	PC.
		3	629B59-6	* STATOR COMPLETE	1	PC.
044		1	424773-5	CUSHION RUBBER	1	PC.
		2	422A56-3	CUSHION RUBBER	1	PC.
045			424517-3	CUSHION	1	PC.
048			251314-2	+ SCREW M4X12 F/HOOK (Item No. A01)	2	PC.
049			652077-7	FLAT HEAD SCREW M3X6	1	PC.
050			857K44-5	DTW800XV SERIAL NO. LABEL	1	PC.
051		3	620K29-2	* CONTROLLER	1	PC.
052		3	652119-7	* PH SCREW M2X6	6	PC.
E01			632L10-7	LEAD UNIT	1	PC.

Item No	Type	Sub	Part No	Description	Qty	Unit
ACCESSORIES						
- See Catalogue or visit www.makita.ca for more accessories -						
A01			346949-3	HOOK	1	PC.
A02			---	BATTERY CHARGER		
A03			---	18V LI-ION BATTERY		
A04			---	LI-ION BATTERY ACCESSORIES		
A05			197212-5	INTERLOCKING CASE L	1	PC.
	INC.		453974-8	LATCH	4	PC.
A06			837645-9	INNER TRAY F/ INTERNAL LOCKING CASE L	1	PC.
A07			191G67-2	EXTENSION HANDLE	1	PC.

1. Changes on Stator Complete

(T/1#C1351) (T/1#DE552)

Item No.	Description	Type 1	Type 2	Type 3
42	STATOR COMPLETE	629295-2	629361-5	-----
	STATOR	-----	-----	629B59-6
51	CONTROLLER	-----	-----	620K30-7
52	PAN HEAD SCREW M2X	-----	-----	652119-7

Above parts are completely interchangeable as a set.